

# ACCESSORIES

The range of automatic door operators Manusa Visio allows the incorporation of new accessories and functions.



1

#### Airlinx Selector

Advanced wireless selector for operating control and local door diagnosis. With keypad and LCD screen.



2

#### Manulink software and Ethernet adaptor

Allows remote control and time programming.



3

#### Openlinx

Allows remote management for automatic doors from a web navigator and its integration with industrial and immotic buses.



4

#### ASD audio system

The automatic door gives users acoustic messages.



5

#### LED display

Integrated in the front cover, it gives users visual messages.



6

#### Concealed lighting

Gives the entrance aesthetic visibility, or allows a colour code to be established according to the function inside specific locations or transit areas.



7

#### Ledglass leaves lighting\*

Creation of customised designs using LED lighting.



8

#### Self-dimming glass\*

Allows the transparency of the leaves to be changed for specific privacy needs.



9

#### Glass with integrated Venetian blind\*

A blind integrated in the glass.



10

#### People counter

Crowd measuring system in closed spaces that allows knowledge of entrance and exit traffic.

### OTHER AVAILABLE ACCESSORIES

#### Activation

- Planar Radar
- Smart-Prox touchless switch
- Wide range of push buttons, wired and wireless
- Remote control
- Exterior key switch (wired and wireless)
- Numeric keypad (wired and wireless)
- Handsfree system
- RFID system

#### Safety

- Photocells
- HDS hybrid sensor
- HPS AIR lateral safety sensor
- CO48 mechanical redundant fail-safe system
- Electromechanical lock
- Cover lock
- Floor lock

#### Control

- Smart selector
- Optima selector
- Optima remote control
- I/O interface

manusa

intelligent access

#### HEADQUARTERS

Avda. Via Augusta, 85-87, 6th floor

08174 Sant Cugat del Vallès, Barcelona · Spain

Tel.: +34 935 915 700 · Email: export@manusa.com

[www.manusa.com](http://www.manusa.com)

#### BRANCHES

Spain, Portugal, Brazil, China

#### INTERNATIONAL DISTRIBUTORS

##### AFRICA

Algeria, Egypt, Morocco, Nigeria, Republic of Angola, Republic of Mozambique, South Africa, Tunisia, United Republic of Tanzania

##### AMERICA

Argentina, Colombia, Costa Rica, Cuba, Chile, Ecuador, Mexico, Panama, Paraguay, Peru, Uruguay, Venezuela

##### ASIA/OCEANIA

Hong-Kong, India, Indonesia, Malaysia, Myanmar, New Zealand, Pakistan, South Korea, Taiwan, Thailand, The Philippines, Vietnam

##### EUROPE

Andorra, Belgium, Bosnia-Herzegovina, Cyprus, Czech Republic, Finland, France, Germany, Greece, Holland, Hungary, Iceland, Ireland, Italy, Latvia, Luxembourg, Poland, Romania, Russia, Serbia, Slovakia, Slovenia, Switzerland, Turkey, Ukraine, United Kingdom

##### MIDDLE EAST

Bahrain, Jordan, Kuwait, Lebanon, Qatar, Saudi Arabia, Syria

D90019-EN



# Visio

Range of automatic door operators



manusa

intelligent access

\* For sale out of Spain please ask export department

# Visio

manusa   
intelligent access

Range of automatic door operators

Visio is the most comprehensive operator range available on the market:

- 100, 125 and 175 mm high cover versions to cater all construction needs.
- LD, MD and HD motor groups depending on the dynamic features required.

Visio  
**100**

Visio  
**125**

Also available for telescopic doors

Visio  
**175**

With 2 configuration options:

**Visio LD** Motor Group

Single slide door: **120kg / leave**

Bi-parting door: **90kg / leave**

One **gear motor**

**Visio MD** Motor Group

Single slide door: **160kg / leave**

Bi-parting door: **120kg / leave**

Two **direct drive** motors

**Visio HD** Motor Group

Single slide door: **293kg**

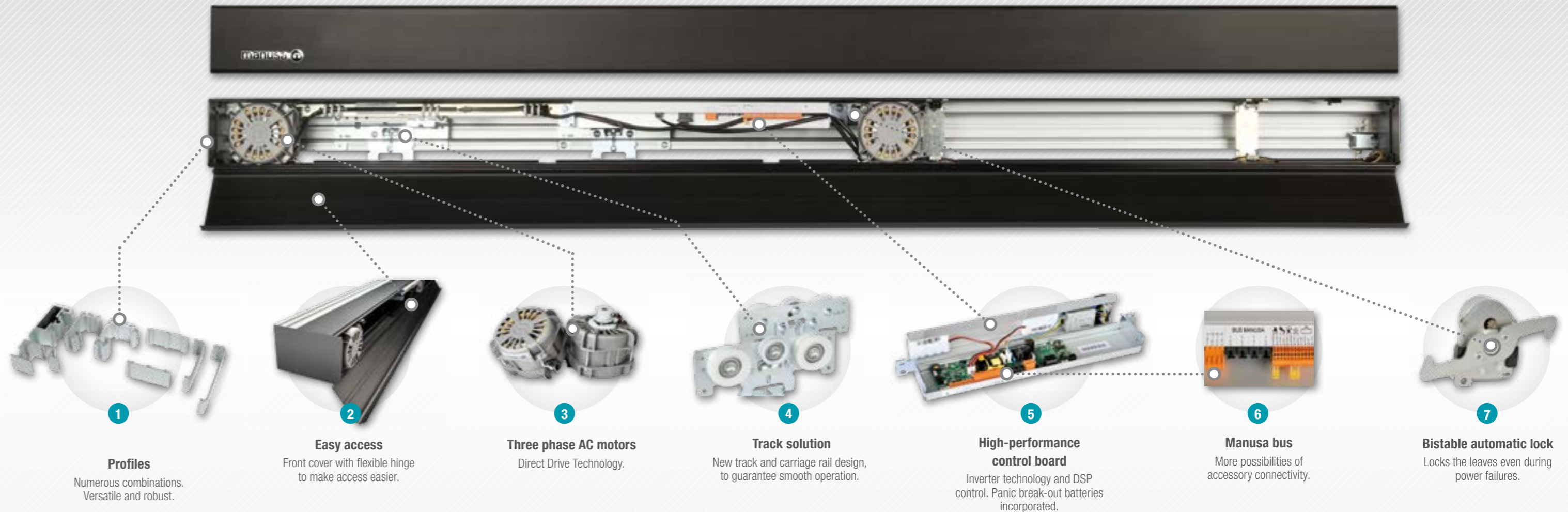
Bi-parting door: **220kg**

Two **gear motors**

\* The suggested maximum weights will depend on the required speed in each application.

## FEATURES

Applus<sup>®</sup> idneo   



### 1 Profiles

Numerous combinations.  
Versatile and robust.

### 2 Easy access

Front cover with flexible hinge  
to make access easier.

### 3 Three phase AC motors

Direct Drive Technology.

### 4 Track solution

New track and carriage rail design,  
to guarantee smooth operation.

### 5 High-performance control board

Inverter technology and DSP  
control. Panic break-out batteries  
incorporated.

### 6 Manusa bus

More possibilities of  
accessory connectivity.

### 7 Bistable automatic lock

Locks the leaves even during  
power failures.

## TECHNOLOGY

- The fastest opening on the market, thanks to a powerful motor group.
- Two three phase AC motors with Direct Drive provide unbeatable durability.
- The Inverter technology (independent adjustment of force and speed) and the electronic management of the motor via DSP (digital signal processor) offer excellent gentle movement.
- Very silent: Direct Drive and optimised track rail.
- Greater accessory connectivity possibilities thanks to the Manusa bus.
- Interconnection to domotic systems and industrial buses.
- Remote control and time programming via Ethernet thanks to the Manulink software.
- Possibility of incorporating people counter systems.
- Possibility of incorporating new accessories and functions.

## EASY TO INSTALL

- Small number of components.
- Connection via the Manusa bus simplifies wiring.
- Universal connector for all accessories.
- Universal fixing system for fixed leaves.
- Numerous self-supporting assembly possibilities thanks to the different beam profile versions.

## ADAPTABLE TO ALL ARCHITECTURAL ENVIRONMENTS

- Given its refined design.
- Given its compact size with a lower visual impact.
- Thanks to its wide range of finishings, including customised finishings.
- Impossible to see the mechanism from outside.
- It makes greater transparency of the leaves possible thanks to the hidden rail.

## VERSATILE AND FLEXIBLE

- Given its dozens of assembly layouts.
- It can be used with all types of leaves (Manusa and commercial up to 50 mm).
- It includes a wide range of accepted dimensions and weights.

## SAFETY

- Gentle automatic reopening when obstacles are detected.
- Side safety sensors.
- It incorporates a connection for a fire alarm.

The Manusa Visio operator range is beyond the standards established in EN16005 about safety in use of power-operated pedestrian doorsets.